



**HLF-70430610**

WALTCO PUMP 2400PSI  
RATED HLF-25 AND HLF-30

**\$ 1,550<sup>00</sup>** EACH



**HLF-70430620**

WALTCO PUMP 3200PSI  
RATED HLF-40 AND HLF-50

**\$ 1,550<sup>00</sup>** EACH



**XA-62671HPU**

HYDRAULIC POWER  
UNIT...12V HOLLAND

**\$ 1,710<sup>00</sup>** EACH



**XA-59652**

HOLLAND 4 BUTTON  
CONTROL SWITCH

**\$ 235<sup>00</sup>** EACH

# MAVERICK

## HYDRAULICS



**XA-58359-02**

HOLLAND 2 BUTTON  
CONTROL SWITCH

**\$ 96<sup>00</sup>**  
EACH



**280990-01**

MAXON CYLINDER 2.75"  
BORE X 1.25" ROD X 11.5"  
STROKE WITH CROSS TUBES

**\$ 925<sup>00</sup>**  
EACH



**26580010**

WALTCO CYLINDER 3" BORE  
X 1.25" ROD X 7.5" STROKE  
WITH VFUSE, CROSS TUBES

**\$ 1,550<sup>00</sup>**  
EACH



**22780050**

WALTCO CYLINDER 3.25"  
BORE X 1.5" ROD X 10.75"  
STROKE WITH MANIFOLD,  
TRANSFER TUBE

**\$ 1,225<sup>00</sup>**  
EACH



**XA-57513**

HOLLAND TAILGATE  
CYLINDER 3" BORE X 1.5" ROD  
X 10.5" STROKE

**\$ 875<sup>00</sup>**  
EACH



**XA-58748**

HOLLAND SWING CYLINDER  
2.25" BORE X 1" ROD X 5.5"  
STROKE - 12.5" CENTRE TO  
CENTRE

**\$ 795<sup>00</sup>**  
EACH



**RK-59010-02**

HOLLAND CYLINDER 3" BORE  
X 1.25" ROD X 10" STROKE  
WITH CROSS TUBES

**\$ 825<sup>00</sup>**  
EACH



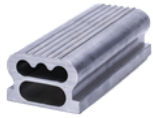
**XA-59363**

HOLLAND PLATFORM  
EXTENSION HINGE TL40  
(24")

**\$ 790<sup>00</sup>**  
EACH

# MAVERICK

## HYDRAULICS



**XA-59362**

HOLLAND PLATFORM  
EXTENSION HINGE (7-1/4")

\$ **223**<sup>10</sup>  
EACH



**XA-51895**

HOLLAND GROOVED PIN  
W/CLIPS...1.5 X 4.56

\$ **39**<sup>50</sup>  
EACH



**XA-57707**

LIFT FRAME PIN 5000 LB...  
1.5 X 7.125

\$ **46**<sup>50</sup>  
EACH



**XA-57706**

HOLLAND PLATFORM  
PIN...1.25 X 19.625

\$ **48**<sup>00</sup>  
EACH



**XA-58781**

HOLLAND PLATFORM  
PIN...1.25 X 19.625

\$ **48**<sup>00</sup>  
EACH



**XA-58778**

HOLLAND CYLINDER BORE  
END PIN...1.25 X 5.5

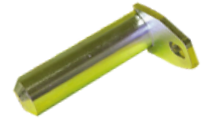
\$ **39**<sup>50</sup>  
EACH



**XA-58779**

HOLLAND CYLINDER ROD  
END PIN...1.25 X 4.75

\$ **48**<sup>20</sup>  
EACH



**XA-58790**

HOLLAND LIFT FRAME  
PIN...1.25 X 4.875

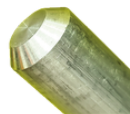
\$ **45**<sup>00</sup>  
EACH



**XA-58795**

HOLLAND SHACKLE PIN...1.25  
X 5.5

\$ **43**<sup>25</sup>  
EACH



**XA-59410-04375**

HOLLAND TAILGATE HINGE  
PIN ALUMINUM

\$ **60**<sup>25</sup>  
EACH



**XA-59247**

HOLLAND CYLINDER PIN  
ALUMINUM, PLATED

\$ **69**<sup>00</sup>  
EACH

# MAVERICK

## HYDRAULICS



**XB-59572**

ROADSIDE TORSION SPRING  
HD .625"

**\$ 199<sup>99</sup>** EACH



**XB-51858**

1.5" DIAMETER X 1.5"  
BUSHING 24DXR24

**\$ 40<sup>00</sup>** EACH



**XB-51859**

1.25" DIAMETER X 1"  
BUSHING 20DXR16

**\$ 40<sup>00</sup>** EACH



**XB-51909**

RETAINING RING

**\$ 9<sup>00</sup>** EACH

TORSION SPRINGS			
ROAD SIDE		CURB SIDE	
R.H. HELIX XB-50009		L.H. HELIX XB-50008	
R.H. HELIX XB-50907		L.H. HELIX XB-50906	
R.H. HELIX XB-51112		L.H. HELIX XB-51111	
R.H. HELIX XB-51483		L.H. HELIX XB-51484	

NOTE: FOR TL SERIES THIS IS A CURB SIDE SPRING

NOTE: FOR TL SERIES THIS IS A ROAD SIDE SPRING

## ALSO AVAILABLE...



FORKLIFT CYLINDER  
REPLACEMENTS



GARBAGE TRUCK  
CYLINDER  
REPLACEMENTS

**REPAIRS DONE  
RESPONSIBLY**

Call 905-795-7885 to place your order!